



DM36

36V

36A

Features

- Self-powered multi-function digital panel meter*
- Replaces multiple single-measurement meters with one meter
- Phase loss (single phasing) indication*
- Phase sequence reversal indication
- Programmable CT ratio
- Calculated neutral current
- Auto-ranging for line current and active power display*

Measurement Parameters:

- True RMS phase and line voltages
- True RMS currents
- True power factor
- Displacement power factor (cos Φ)
- Per phase and total power factor
- Power line frequency
- Bidirectional active power (kW)

*For DM36 & DM36V only

Technical Data

POWER SUPPLY (DM36, DM36V)

Auxiliary supply : Self-powered by phase voltage input
Phase voltage : 65 ~ 280 VAC

POWER SUPPLY (DM36A)

Auxiliary supply : 65 ~ 280 VAC

DISPLAY

Display type : White colour LED display
Display formats : 3 rows x 4 digits per row with indicators

MEASUREMENT SYSTEM

System : Single phase system
: 3-phase 4-wire system

CURRENT MEASUREMENT (TRUE RMS)

Measurement type : True RMS line currents
: Calculated neutral current
CT primary setting : 5 ~ 9999 A
CT secondary : 5 A
Minimum current measurement : 20 mA (secondary current)
Accuracy : 1.0% from 1A to 6A (secondary)

Burden : < 0.05 VA at 5 A
Sustained overload : 6 A

VOLTAGE MEASUREMENT (TRUE RMS)

Measurement type : True RMS phase and line voltage
Nominal phase voltage : 65 ~ 280 V AC
Minimum measurement : 10 V AC
Accuracy : 0.5%

FREQUENCY MEASUREMENT

Measurement Input : Any available voltage input
Measurement range : 45.0 ~ 65.0 Hz
Accuracy : 0.5%

ACTIVE POWER MEASUREMENT

Measurement type : Instantaneous power
Accuracy : 1.0%

POWER FACTOR MEASUREMENT

Measurement type : True power factor, displacement power factor and total power factor
Accuracy : 1.0% from ±0.50 to 1.00 PF

MECHANICAL

Approximate Weight : 0.26 kg
Dimension (mm) : 96(w) x 96(h) x 55(d)
Mounting : Panel mount
Panel cut-out (mm) : 91(w) x 91(h)

ENVIRONMENTAL

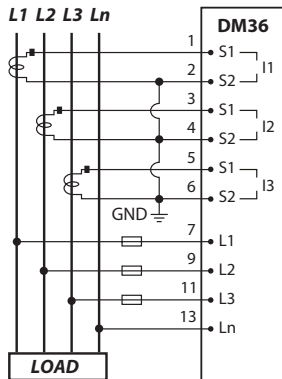
Operating temperature : -10 to 55°C
Storage temperature : -20 to 70°C
Humidity rating : 5% to 95% RH non-condensing
Enclosure protection : IP54 at the front panel
: IP50 at the back body

TEST STANDARDS

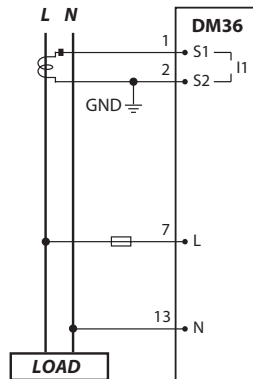
IEC 61326-1,
CISPR 11
IEC 61000-4-2,
IEC 61000-4-3,
IEC 61000-4-4,
IEC 61000-4-5,
IEC 61000-4-6,
IEC 61000-4-8,
IEC 61000-4-11,
IEC 60255-27

Connection Diagrams

DM36 CONNECTION DIAGRAM

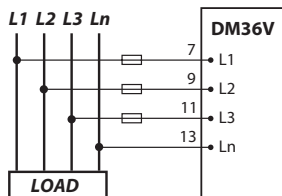


DM36 three-phase measurement connection diagram.

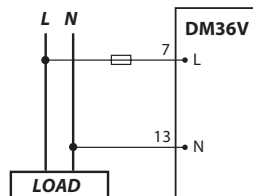


DM36 single-phase measurement connection diagram.

DM36V CONNECTION DIAGRAM

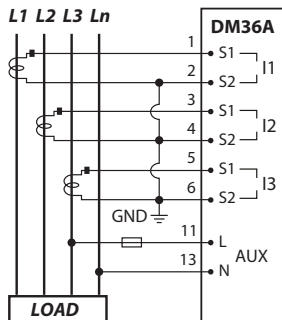


DM36V three-phase voltage measurement connection diagram.

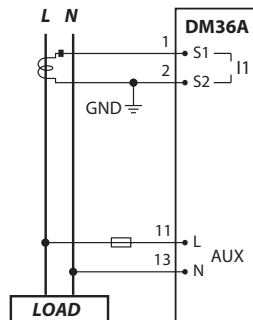


DM36V single-phase voltage measurement connection diagram.

DM36A CONNECTION DIAGRAM



DM36A three-phase current measurement connection diagram.

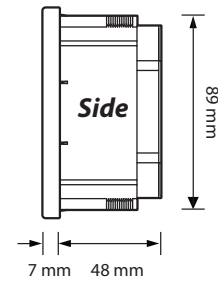
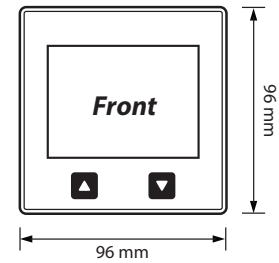


DM36A single-phase current measurement connection diagram.

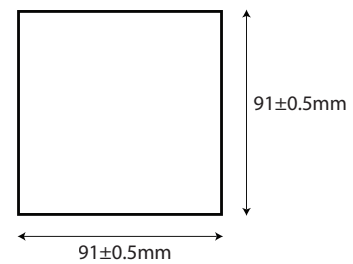
Model Information

	DM36	DM36V	DM36A
Phase voltage	√	√	---
Line voltage	√	√	---
Line current	√	---	√
Neutral current (Computed current)	√	---	√
Active power (kW)	√	---	---
True power factor	√	---	---
Displacement power factor	√	---	---
Total power factor	√	---	---
Frequency	√	√	√

Case Dimensions



Cut-Out Recommendations



Ordering Information

MODEL DESCRIPTION

DM36	Self-powered 65~280V AC multi-function digital meter
DM36V	Self-powered 65~280V AC digital voltmeter
DM36A	Auxiliary voltage 65 ~ 280 V AC digital ammeter